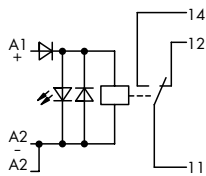
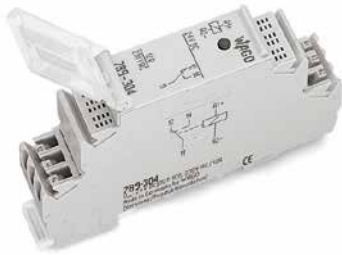


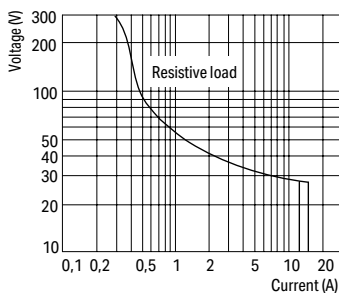
Relay Module

789 Series



Relay Module; 1 changeover contact; Limiting continuous current: 12 A; Status indicator: red; 18 mm wide

U_N	I_N	Item No.	Pack. Unit
24 VDC	19 mA	789-304	10



DC Load Limit Curve

Control Circuit	
Input voltage range	-15 ... +10 %

Load Circuit	
Number of changeover/switchover contacts	1
Contact material	AgNi 90/10
Limiting continuous current	12 A
Inrush current (resistive) max.	30 A (AC) / 4 s
Switching voltage (max.)	250 VAC
Switching power (resistive) max.	3000 VA (AC); DC see load limit curve
Recommended minimum load	12 V / 10 mA
Pull-in time (typ.)	8 ms
Drop-out time (typ.)	6 ms
Bounce time (typ.)	6 ms
Mechanical life	3 x 10 ⁶ switching operations

Signaling	
Status indicator	Red LED

Safety and Protection	
Rated voltage	250 V
Rated surge voltage	4 kV
Pollution degree	2
Dielectric strength, control/load circuit (AC, 1 min)	5 kV _{rms}
Dielectric strength, open contact (AC, 1 min)	1 kV _{rms}
Protection type	IP20

Connection Data	
Connection technology	CAGE CLAMP®
Solid conductor	0.08 ... 2.5 mm ² / 28 ... 14 AWG
Fine-stranded conductor	0.08 ... 2.5 mm ² / 28 ... 14 AWG
Strip Length	9 ... 10 mm / 0.35 ... 0.39 inch

Physical Data	
Width	17.5 mm / 0.689 inch
Height from upper-edge of DIN-rail	55 mm / 2.165 inch
Depth	90 mm / 3.543 inch

Mechanical Data	
Mounting type	DIN-35 rail

Material Data	
Weight	50.5 g

Environmental Requirements	
Surrounding air temperature (operation at U_N)	-25 ... +40 °C
Surrounding air temperature (storage)	-40 ... +85 °C
Processing temperature	-25 ... +50 °C

Standards and Specifications	
Standards/specifications	EN 60664-1